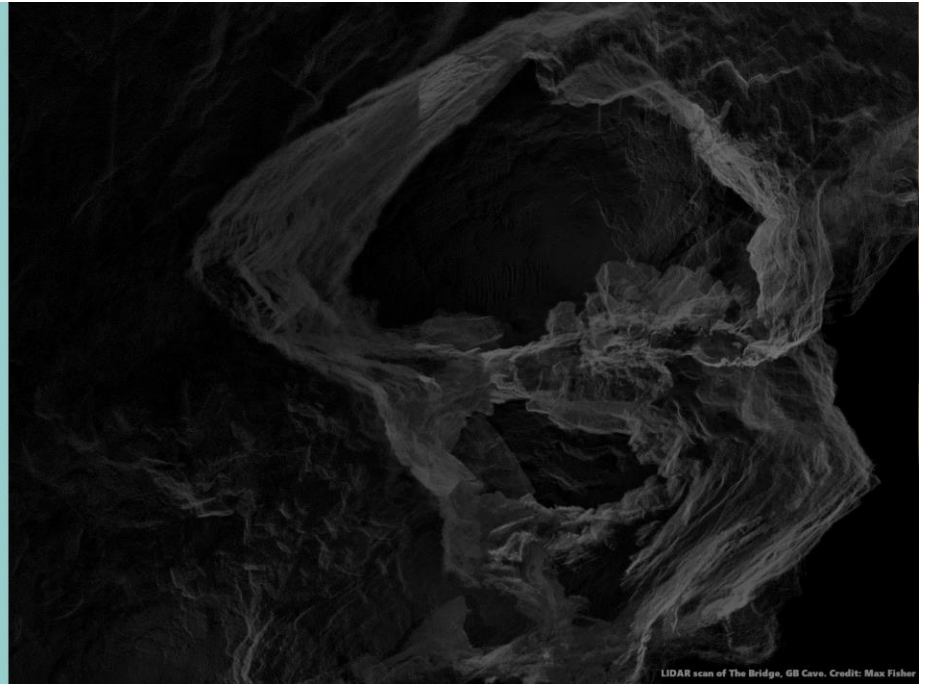


COUNCIL OF SOUTHERN CAVING CLUBS

NEWSLETTER

MAY 2023



LIDAR scan of The Bridge, GB Caves. Credit: Max Fisher

A note from the Chair

It is nearly three years since I chaired my first CSCC meeting in July 2020 during a time of some controversy. In that time I feel that much progress has been made in improving the culture of meetings, better representation of members and critically with the relationship with the BCA. Two areas I would have liked to make more progress were access policy and how CSCC could better represent cavers who are not affiliated to member clubs, I hope the future Chair will be able to tackle these more effectively than I was able to. I am not a political animal, and have never relished involvement in the unglamorous activities that go unseen in the background that play such a crucial role in enabling us to enjoy ourselves underground. As such, although I have enjoyed many aspects of the role, the AGM will be my last meeting before standing down as previously notified to members.

At this AGM we have several officer positions for which nominations have not been received, namely Chair, Communications and Training. Given that no formal nominations have been received, the constitution allows nominations for these to be made from the floor at the AGM. I would encourage all southern cavers to have a think about whether they could spare the time to carry out one of these vital roles to help out the caving community. Although only nominated representatives of member clubs are able to vote at the AGM, any caver is welcome to attend as an observer. Though you may not have a vote, you will still be able to contribute to the debate, and as such influence any votes that take place.

Ed Waters, Chair

Upcoming Annual General Meeting

12 May 2023 from 19:00 via Zoom

Draft minutes from the 2022 AGM are available on the [CSCC website](#) along with the agenda for the upcoming meeting and officers reports.

Please follow the below link to join the meeting on Zoom:

<https://us06web.zoom.us/j/88659686765?pwd=eE5velo2dnM5R1NBZ1ZSeUU5dlldyZz09>

Remember that only nominated club representatives may vote, but anyone can attend as an observer and join the discussion. As ever, please follow the usual online meeting etiquette and ensure your microphone is muted when you are not speaking.

Swildon's changing barn

Following a successful application to the [Somerset Community Foundation](#), £2,000 grant funding has been received to replace the floor in the changing barn at Manor Farm on Priddy Green. The work is scheduled to take place over three weekends and will therefore be unavailable for use from 10th to 26th June. During this time cavers are reminded to be respectful and discrete while changing in the village.

Anyone with suitable skills, experience or enthusiasm who would like to help, is encouraged to contact CandA@csc.org.uk to advise which dates they would be available (10th, 11th, 17th, 18th, 24th, 25th June).

Cordless pressure washers for cave conservation



After some delay, we are delighted to announce that the CSCC now has three cordless pressure washers available to borrow for cave conservation projects. To borrow one (or more) of the washers please contact CandA@csc.org.uk with details of your proposed conservation project and to arrange collection.

Each unit will be supplied in its own carry case, with everything needed to operate. Just add water!

Caver access to Wookey Hole



Judi Durber at Sting Corner, Wookey 24

Since the access agreement for *Dry Cavers* was signed off by Wookey Hole Caves some 17 trips have taken place, allowing 85 individual cavers to visit the areas beyond Chamber 20. The agreement was reviewed on the 28th March with a representative from Wookey Hole Cave and they are very happy with how it is operating.

As part of our continued relationship with Wookey Hole Caves, photographers visiting Wookey 24 are encouraged to share their photographs with Karen Brixey-Watts, so she can consider including them in a future "The Wookey you know and the Wookey you don't" project. Please contact CandA@csc.org.uk for Karen's contact details.

Ash die-back at Long Wood



Ash die-back remains a problem across the region and elsewhere in the UK. Cavers are reminded that the [Somerset Wildlife Trust](#) have closed public access to their [Long Wood](#) nature reserve and access to the area for caving is subject to the following conditions:

- Helmets must be worn at all times whilst in the reserve.
- Cavers must not enter the reserve when winds are expected to be gusting at approximately 35mph and over. Cavers should check a reliable weather source for the area when planning a visit if high winds seem likely.
- Access to the reserve will ONLY be from the north end and NOT from Black Rock/Velvet Bottom.
- To enable SWT to assess any risks from continued caver access, clubs will be asked to keep a note of the number of visiting cavers to the reserve eg number in party and date visited. This information will be collated by the Charterhouse Caving Company (CCC Ltd) and passed to SWT.
- Visiting cavers are expected to play an active role in conserving and managing the sites, as they do now, by immediately reporting any safety and conservation concerns to the CCC Ltd secretary.

Further details are available on the [CCC Ltd website](#).

SRT training from the CSCC

The CSCC will be running an SRT training course from 16th to 17th of June.

If you would like to take part (either helping to instruct, or to refresh/learn about SRT) then please email training@csc.org.uk.

BCA insurance reminder

BCA's insurance agent has asked that all members be reminded that the insurance policy requires all incidents which could give rise to a claim are notified to BCA and their insurance brokers Howden as soon as the member becomes aware of any such.

This is not a change to the process, but is intended to serve as a reminder of members' responsibilities under the insurance policy.

Failure to do so may affect any claim on the policy.

Howden have put together some guidance for use in considering what matters should be reported. This is available in full in the CSCC's BCA rep report on the [CSCC website](#).

Nettle Pot fitted with new CSCC padlock



Nettle Pot (pictured above with Ubley Warren Pot in the background) has recently been fitted with the 'new style' CSCC padlock and can now be opened using the standard CSCC key.

Please note that an unstable area below the Rock of Damocles has been taped off for safety and this area should be avoided until further notice.

Visiting cavers are reminded that CSCC keys are available to borrow from the following Mendip clubs: [ACG](#), [BEC](#), [CSS](#), [MCG](#), [MNRC](#), [SMCC](#) and [WCC](#).